

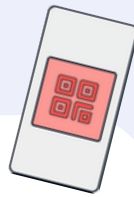


## TYPES OF STAMP METHODS

At Stamp Me, we believe the more options, the better. Especially when it comes to stamp issuing, where finding what suits your business best is essential.

So let's dive in to the various delightful methods for issuing stamps to your valued customers within your Stamp Me loyalty program. Whether you're already running a successful program or just getting started, we've got you covered!

### Stamp Code



- **What is it?** A **QR code** that can be scanned multiple times to issue stamps. Members simply scan it using our in-App camera to collect a stamp.
- **Where do I get them?** You can [download your Stamp Code\(s\)](#) from your [Merchant Console](#).
- Perfect for **physical businesses**, instantly accessible, easy to implement
- **Where can I display them?** The Stamp Code is best located near the POS or behind the cash register for access during qualifying purchases.

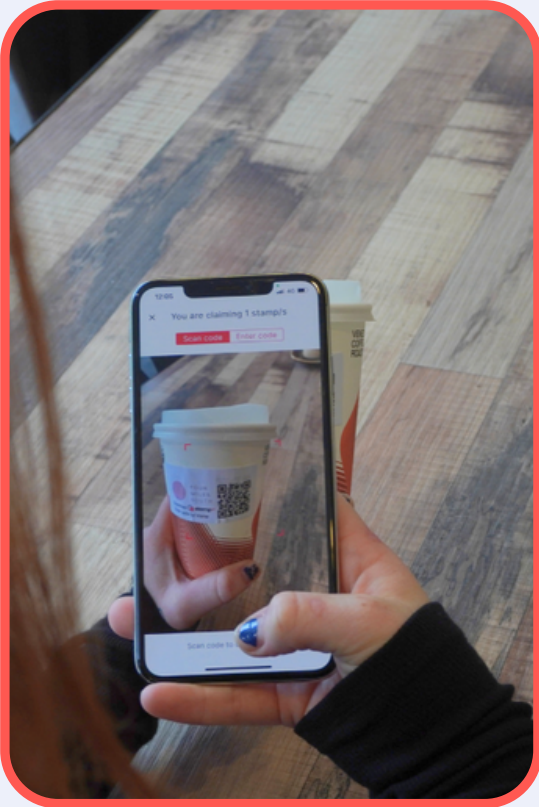


**Fun fact:** Stamp Codes are unique per location and Stamp Card. For example, if you have two locations and set up two stamp cards for each, you will receive four Stamp Codes.




**Lux Nails Bar** displays their Stamp Code at their point-of-sale so that customers can earn a stamp through the QR code.


## OneStamps



- **What is it?** Members scan or collect a unique, **one-time code**. Once the code is scanned or entered, the code automatically expires. It will not issue any more stamps.
- **Where do I get them?** You can order OneStamps from the [‘Manage Stamp Methods’ section](#) of your Merchant Console.
- Perfect for **takeaway food/delivery** services and online businesses, but work well for in-store operations with high purchase volume



**Fun fact:** OneStamps codes can be printed onto anything, including stickers, labels or flyers. They can also be sent digitally, such as on e-receipts.



**Sticky AF** applies OneStamps to their disposable vape and cannabis products for customers to earn a stamp after making an online purchase.



### A few quick things:

To manage your stamp methods, simply click ‘Manage Stamp Methods’ underneath your stamp card and you’ll see the available stamp methods to the right hand side.

If you’re uncertain about which stamp method suits your business best, [don't hesitate to reach out to us!](#) We’re here to help you find the perfect fit.

## Merchant Console



- **What is it?** Stamps are applied manually to a customer's profile.
- **How do I do it?** From the Merchant Console, head to the ['Members' area](#) and press 'Give Stamps'. Follow the prompts and proceed. The stamps will apply to the member's stamp card after a few seconds.
- Perfect for on-the-go or **remote** merchants



## Stamp Device



- **What is it?** A device that utilizes 'tap-and-go' technology that makes stamping a breeze.
- **How does it work?** To collect a stamp, customers simply press the 'Stamp Me' button on the stamp card and tap their phone on the device. A stamp will automatically be added.
- Perfect for **physical businesses** who are looking for a modern edge

Interested? [Register here](#) today to receive your very own Stamp Device for your loyalty program.



